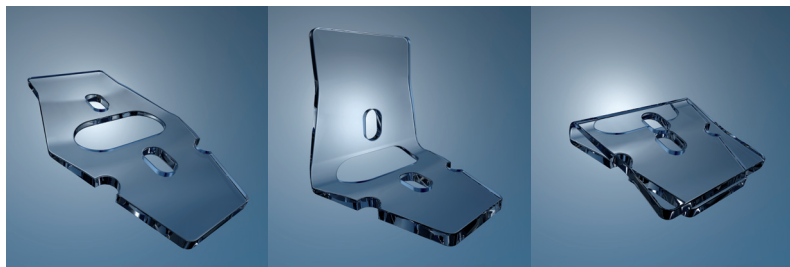


Esnoper - AJL Ophthalmic



	ESNOPER CLIP	ESNOPER V-2000
Reference	VCLIP-AJL	V-2000
Model (suprimido) Type	Hydroxyethyl Methacrylate (HEMA)	Hydroxyethyl Methacrylate (HEMA)
Brand name	ESNOPER CLIP AJL	ESNOPER V-2000
Definition	Uveo-Scleral implant "ESNOPER CLIP"	Scleral implant "ESNOPER V-2000"
Indication	The uveo-scleral implant ESNOPER CLIP is indicated for non-perforating deep sclerectomy in open angle glaucoma surgery.	The scleral implant ESNOPER V-2000 is indicated for non-perforating deep sclerectomy in open angle glaucoma surgerys.
Product description	The ESNOPER uveo-scleral CLIP is an implant specifically designed for the technique of deep sclerectomy in open angle glaucoma. Its purpose is to provide a fixed space to facilitate and extend the drainage of aqueous humor in patients with open-angle glaucoma. The escleral implant ESNOPER CLIP allows two-way drainage pathways, trabecular (intrascleral and supraciliary) and uveo-scleral, inserting a plate in the suprachoroidal bag and positioning the other on the scleral flap, to flowing the aqueous humour through them.	The scleral implant V-2000 is an implant specifically designed for the technique of deep sclerectomy in open angle glaucoma. Its purpose is to provide a fixed space to facilitate and extend the drainage of aqueous humor in patients with open-angle glaucoma. It is implanted under a scleral flap and it intends to create a permanent intraescleral lake to improve the aqueous humour drainage.
Total height	5.50mm	3.00 mm
Thickness	0.20mm	0.20 mm
Suprachoroidal side length	1.30mm	1.40 mm
Base length	2.20mm	2.85 mm
Suture hole	Scleral fixation	Scleral fixation
Longitudinal hole	Drainage	Drainage
Material	Hydroxyethyl Methacrylate (HEMA). Biocompatible acrylic. The Esnoper implant is manufactured with nonionic polymer, hydrogel and an excelent tensor resistance.	Hydroxyethyl Methacrylate (HEMA). Biocompatible acrylic. The Esnoper implant is manufactured with nonionic polymer, hydrogel and an excelent tensor resistance.
Presentation	The implant ESNOPER CLIP is in sterile single packs, easy to open, immersed in highly purified water, and placed in special forceps so that the implant is visible and has an optimum access for its handling.	The implant ESNOPER V-2000 is in sterile single packs, easy to open, immersed in highly purified water, and placed in special forceps so that the implant is visible and has an optimum access for its handling.
Sterilization method	Steam	Steam
Expiration	3 years	3 years